



PARTS CATALOG FOR ST-1

No.6233-F



ST-1

1/8th Nitro Powered 4WD Stadium Racing Truck

Manufactured by **THUNDER TIGER CORPORATION**

<http://www.thundertiger.com>



ST-1

No.6233-F

1/8th Nitro Powered 4WD Stadium Racing Truck



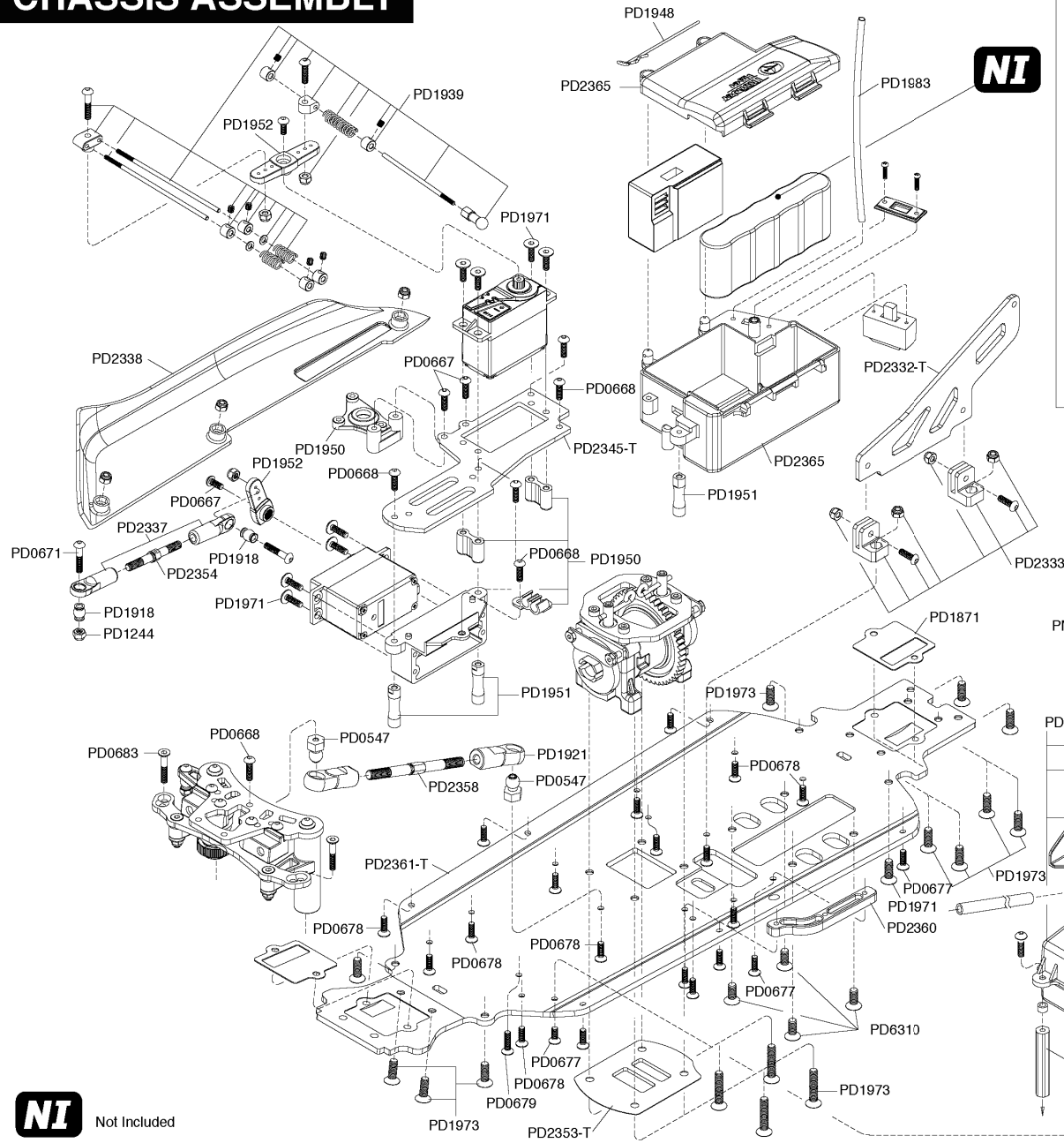
O/L Body

P/S Body

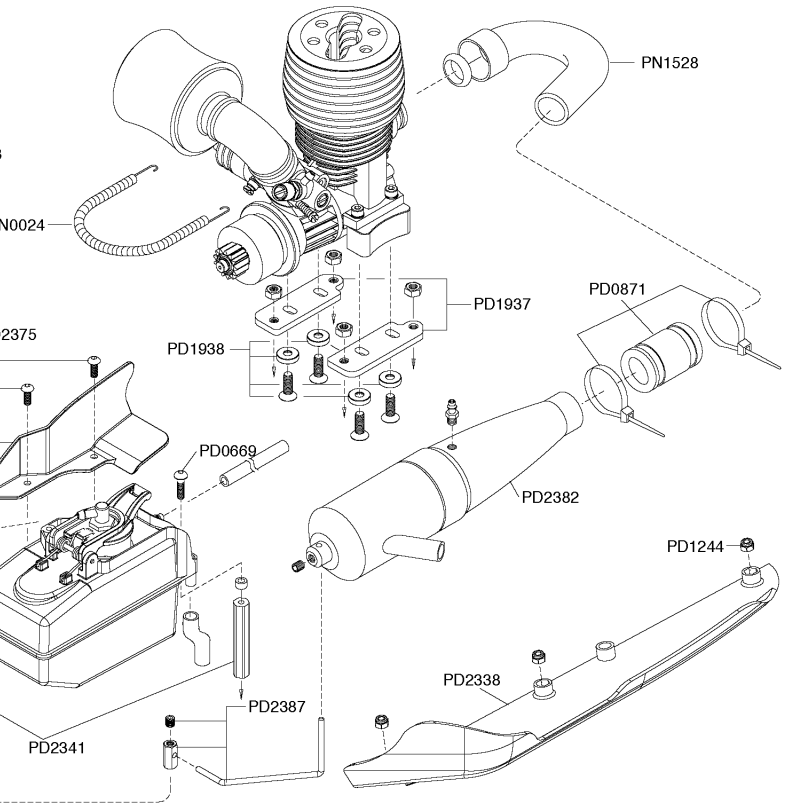
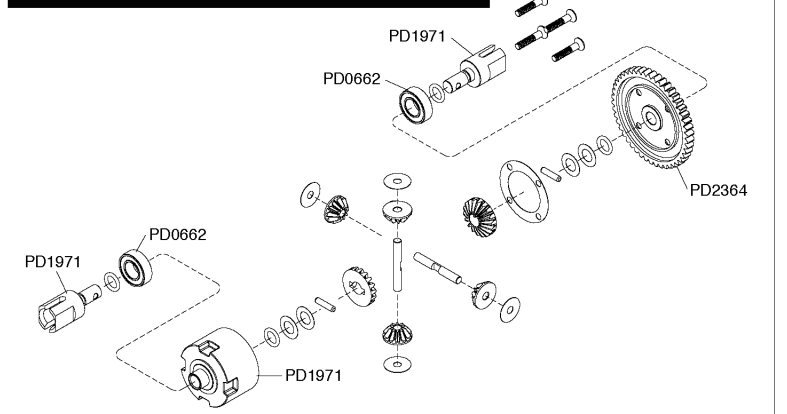
INNOVATIVE FEATURES

1. POWERFUL 4.60C.C. PRO-28BX-RPULL START ENGINE WITH 2 NEEDLE SLIDE CARB.
2. T1 COLOR ANODIZED RADIO TRAY AND STEERING BRACE
3. EXTRA LONG AND RIGID SUSPENSION ARMS PROVIDE SUPERIOR HANDLING. AND BETTER CORNERING ABILITY THAN OTHER TRUCKS.
4. 3 SETS OF DURABLE GEAR DIFFERENTIALS
5. EIGHT-SPOKE CHROME WHEELS & RACE READY HIGH GRIP TIRES.
6. LOWEST C.G.. PORVIDES STABLE HANDLING AND RESISTS ROLLOVERS.
7. FULLY EQUIPPED C.V. DRIVESHAFTS, FRONT, REAR AND CENTER.
8. ENCLOSED RADIO BOX ENABLES TO INSTALL 5 AA SIZE BATTERIES.
9. 150C.C. LARGE CAPACITY FUEL TANK WITH LARGE FUEL SPLASH GUARD
10. 4 MACHINED ALUMINUM OIL-FILLED SHOCKS WITH 3.5MM SHAFTS, MAXIMUM FOR 8 SHOCKS INSTALLED POSSIBLY
11. TUNED PILLOW BALL FRONT SUSP. SYSTEM FOR EASE OF CAMBER TUNING.
12. VARIABLE TOE & SQUAT BLOCKS EQUIPPED.
13. ALUMINUM TUNED PIPE & HEADER
14. HIGH TORQUE 8.0Kg METAL GEAR STEERING & THROTTLE/ BRAKE SERVOS INCLUDED.
15. FULL SET OF BALL BEARINGS TO KEEP DRIVETRAIN COMPONETS SPINNING FREELY.
16. COMPOSITE 3-SHOE CLUTCH
17. DUAL OIL-RESISTANT FIBER DISC BRAKES.
18. 3.5MM FRONT/REAR SWAY BAR INCLUDED
19. 17MM HEX DRIVES FIT PRO-LINE 40 SERIES TIRES

CHASSIS ASSEMBLY

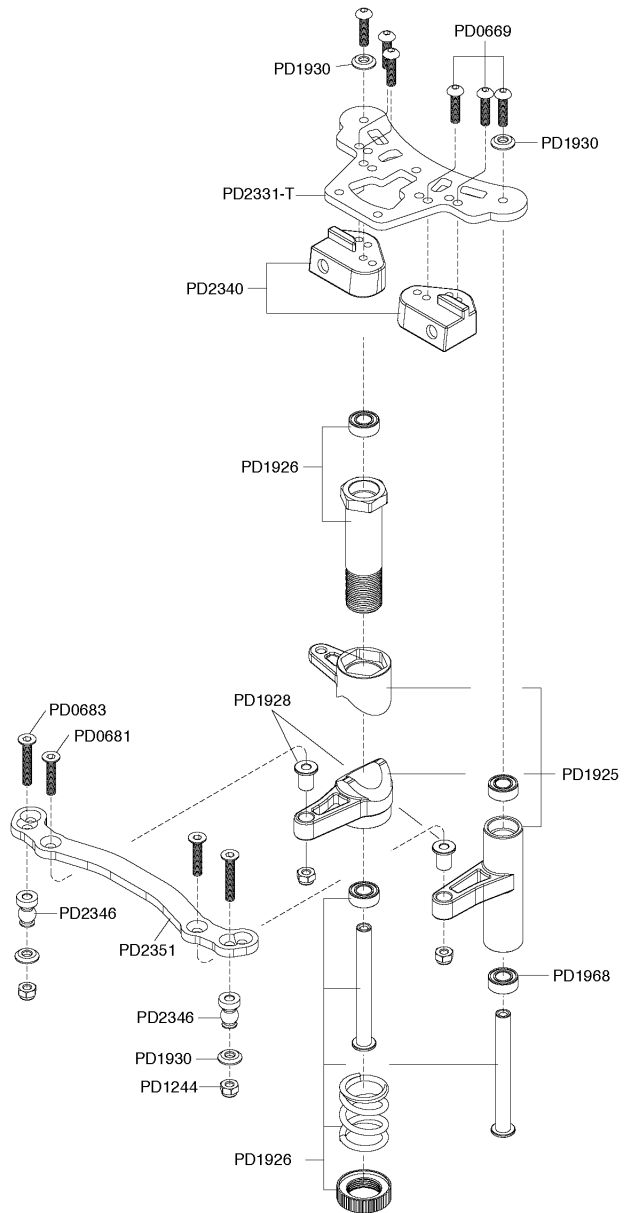


CTR. DIFF. ASSEMBLY

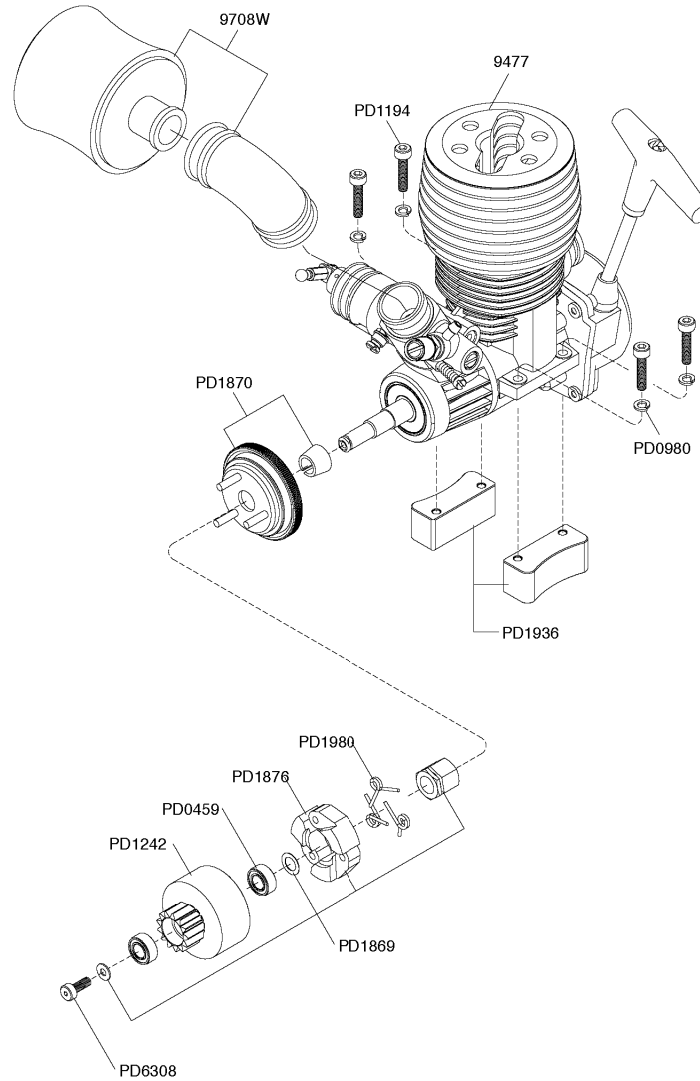


NI Not Included

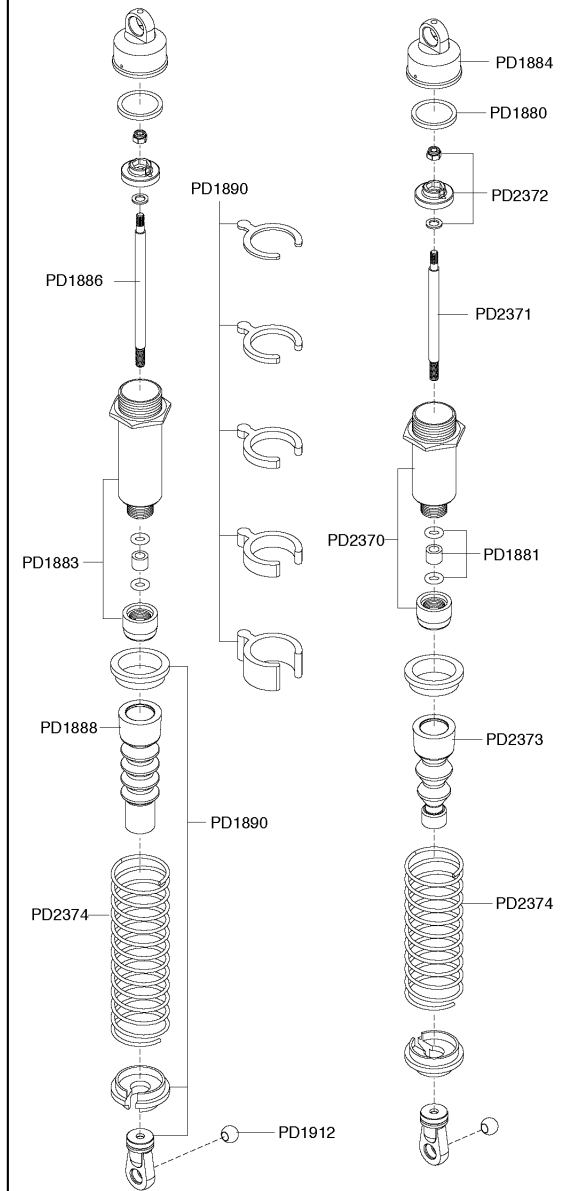
SERVO SAVER ASSEMBLY



ENGINE ASSEMBLY



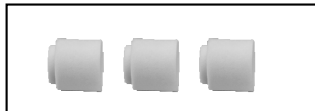
SHOCK ASSEMBLY



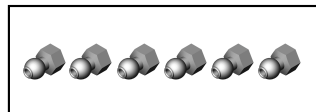
ST-1 PARTS LIST



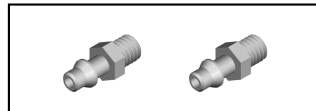
9708W AIR FILTER, 1/8 WHITE



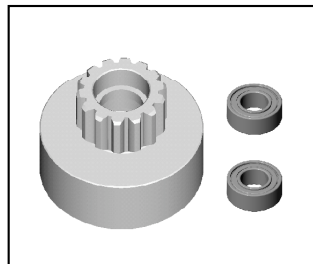
AN1771 FOAM FILTER (3), 1/8



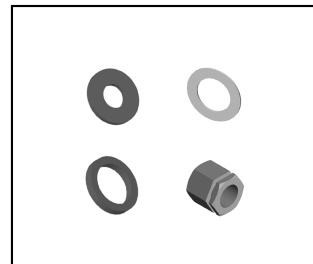
PD0547 STANDOFF BALL, (L)



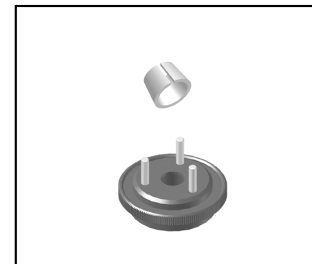
PD0592 PRESSURE FITTING(2)



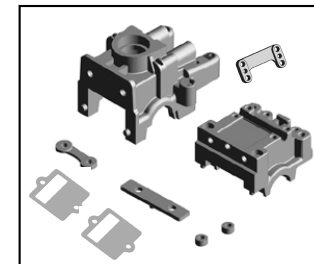
PD1242 1/8 CLUTCH BELL,
26MM 13T



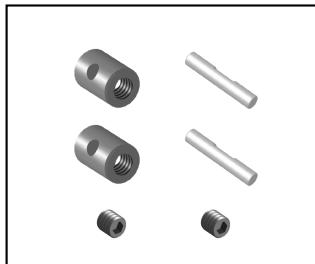
PD1869 CLUTCH HARDWARE,
1/8



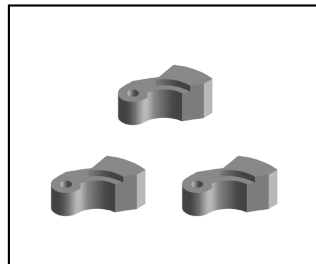
PD1870 FLYWHEEL SET



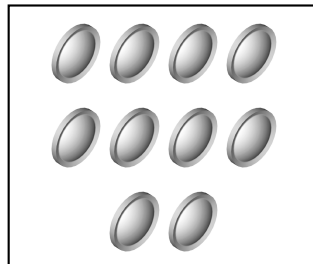
PD1871 TRANS CASE/BULK
HEAD SET,S3



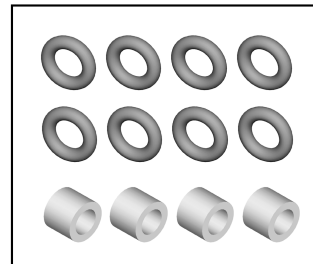
PD1875 UNIV. REBUILD KIT,S3



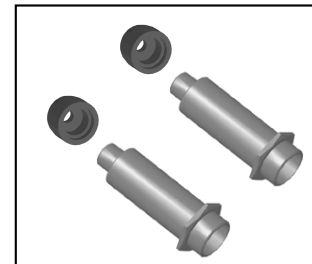
PD1876 CLUTCH SHOE (3), 1/8



PD1880 SHOCK DIAPHRAGM
(10),S3



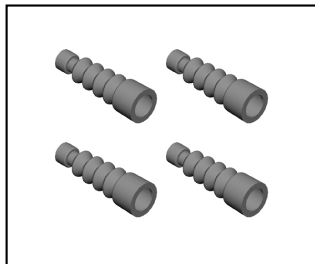
PD1881 O-RINGS & SPACER,S3



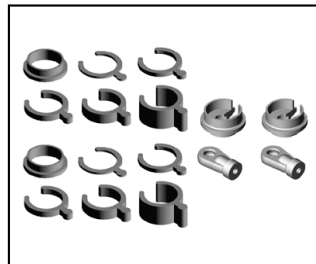
PD1883 RR SHOCK BODY(2),S3



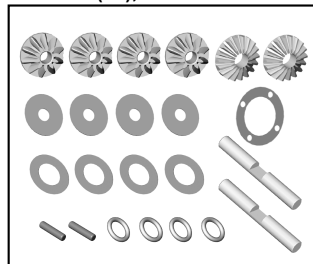
PD1886 RR SHOCK SHAFT(2),S3



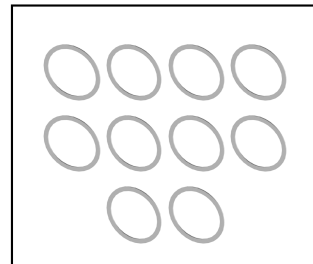
PD1888 RR SHOCK BOOT(4),S3



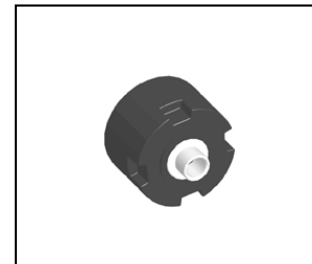
PD1890 SHOCK PLASTIC
PARTS,S3



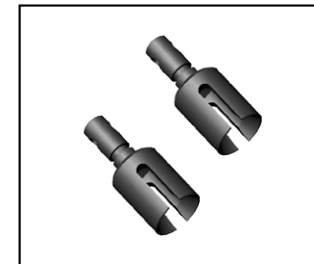
PD1895 DIFF GEAR& PARTS,S3



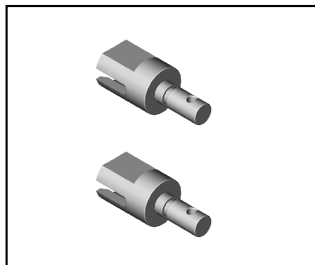
PD1896 DIFF SHIM (10),0.2mm, S3



PD1897 DIFF CASE,S3



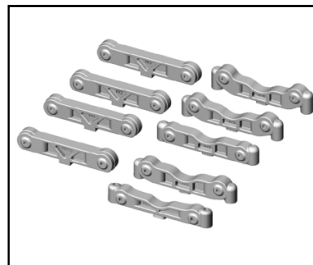
PD1898 DIFF OUTDRIVE(2) FR&
RR,S3



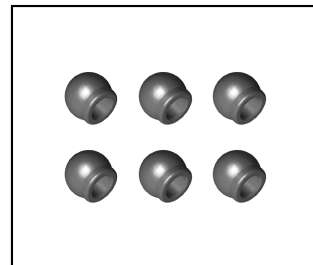
PD1899 DIFF OUTDRIVE(2),
CTR,S3



PD1905 FF SUSP PLATE, S3



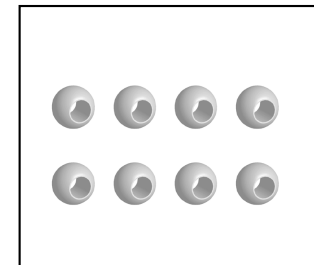
PD1906 SUSP. PLATE SET, S3



PD1907 SUSP. PLATE JOINT,S3

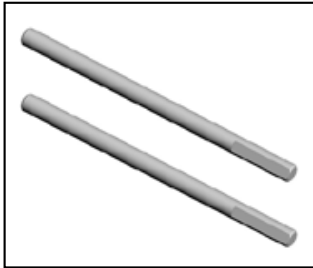


PD1908 UP SUSP. ARM PLATE
,S3

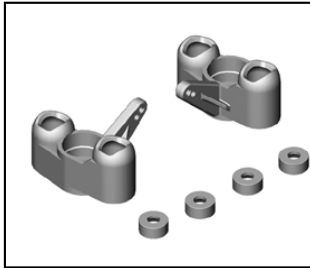


PD1912 PIVOT BALL, S3

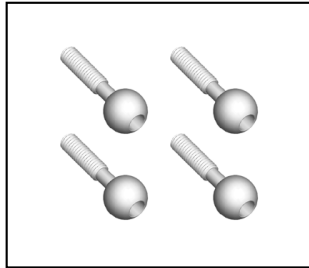
ST-1 PARTS LIST



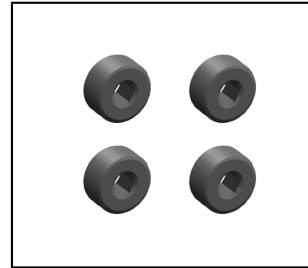
PD1914 RR LOWER HINGE PIN,
S3



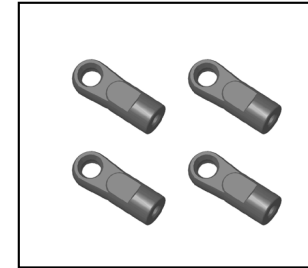
PD1915 KNUCKLE ,S3



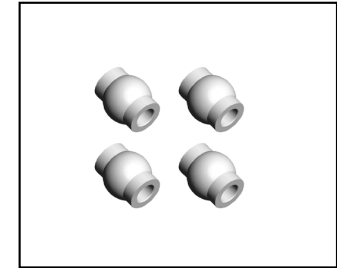
PD1916 ADJ. BALL (4),S3



PD1917 ADJ. SCREW (4),S3



PD1921 RR TIE END,S3



PD1922 RR.PIVOT BALL,S3



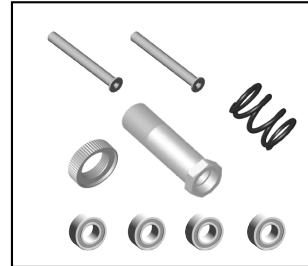
PD1923 REAR HUB SET.S3



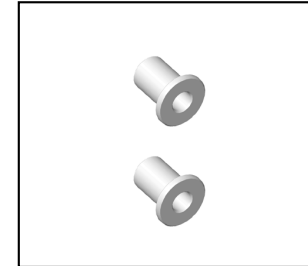
PD1924 HEX WHEEL ADAPTER
SET,1/8, S3



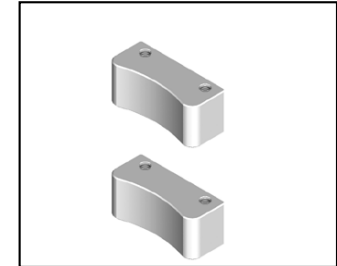
PD1925 SERVO SAVER PL.
PARTS,S3



PD1926 SERVO SAVER ML.
PARTS,S3



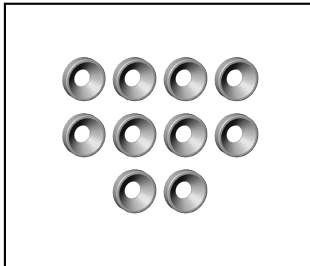
PD1928 SERVO SAVER
BUSHING,S3



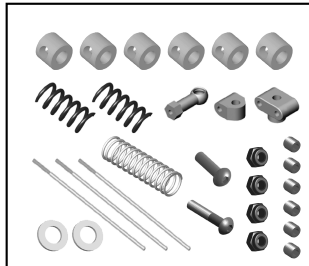
PD1936 ENGINE MOUNT,S3



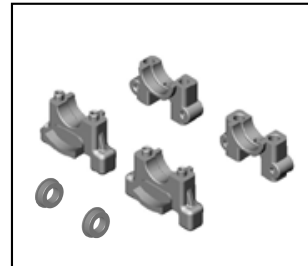
PD1937 A7075 ENGINE DECK,S3



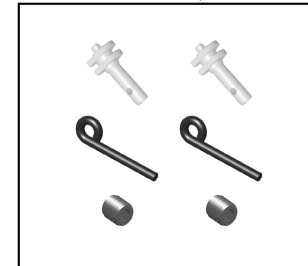
PD1938 ENGINE MOUNT
WASHER,S3



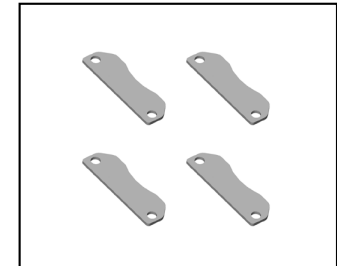
PD1939 THRO./ BRAKE LINKAGE,
S3



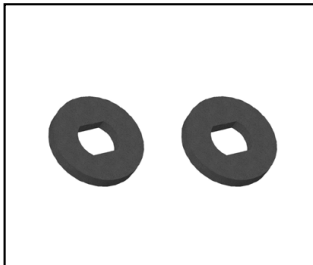
PD1942 CTR DIFF PLASTIC
ASSY, ST-1



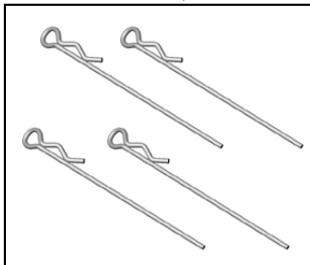
PD1943 BRAKE CAM &
HARDWARE,S3



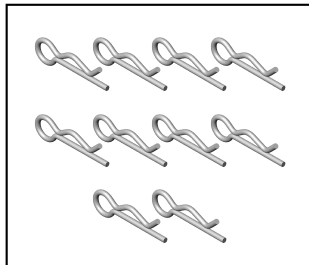
PD1944 BRAKE PADS &
SCREWS,S3



PD1945 BRAKE DISCS,S3



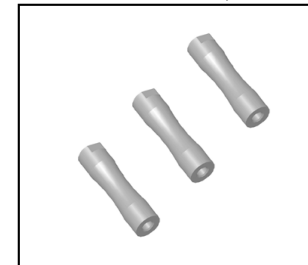
PD1948 R CLIPS(4),LONG



PD1949 R CLIPS(4),SHORT



PD1950 SERVO MOUNT ACC,S3

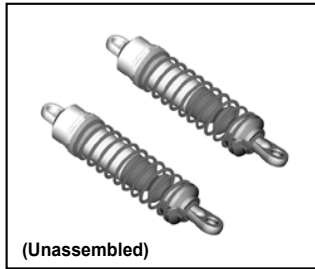


PD1951 ALUM SERVO TRAY
POST,S3



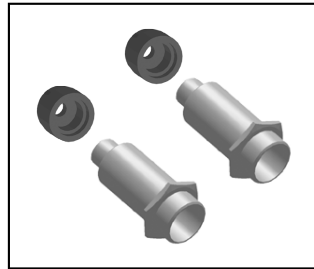
* FITS FUTABA/ JR, AIRTRONIC,
KO PROP
PD1952 SERVO HORN, S3

ST-1 PARTS LIST

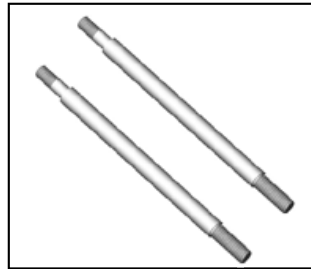


(Unassembled)

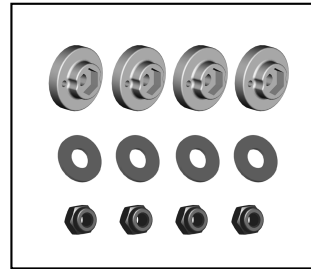
PD2369 FR SHOCK SET(2)



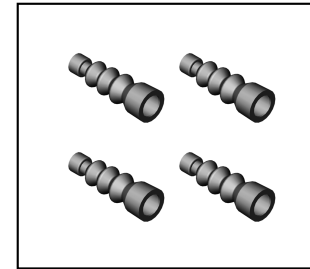
PD2370 FR SHOCK BODY(2)



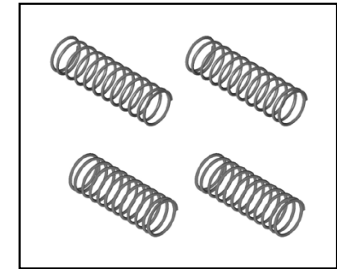
PD2371 FR SHOCK SHAFT(2)



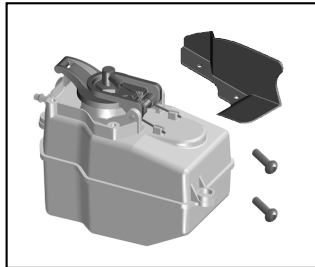
PD2372 SHOCK PISTON(4),S3



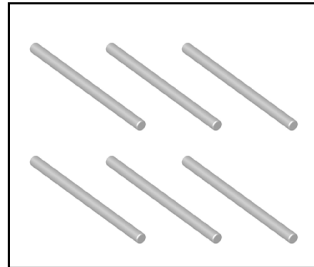
PD2373 FR SHOCK BOOT(4)



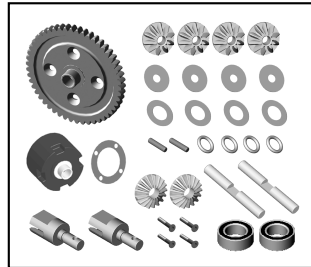
PD2374 FR/RR SHOCK SPRING (2),1.5mm(4.3lb/3.2lb)



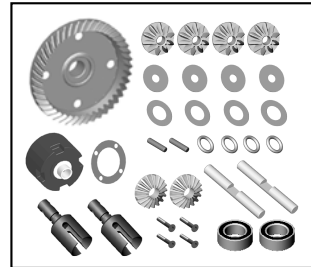
PD2375 FUEL TANK & POST



PD2376 SUSP. HINGE PIN SET



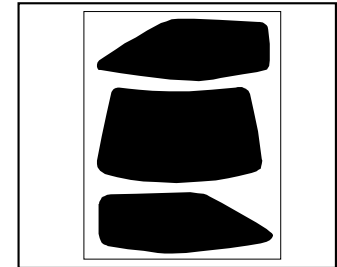
PD2378 CTR DIFFERENTIAL SET



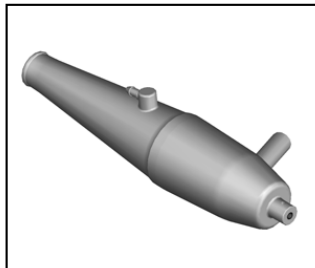
PD2379 FRONT/REAR DIFFERENTIAL SET



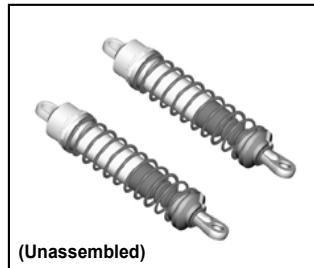
PD2380 BODY DECAL



PD2381 WINDOW MASK

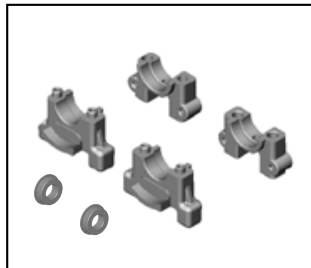


PD2382 1/8 TUNED PIPE

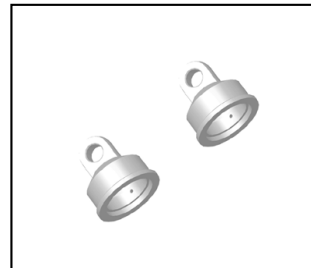


(Unassembled)

PD2383 RR SHOCK SET(2)



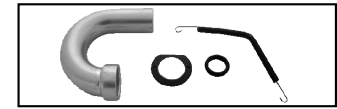
PD2384 CTR DIFF PL. ASSY.



PD2389 SHOCK CAP(2),S3



PD6794 PRINTING BODY SET(P/S)
PD6800 CLEAR LEXAN BODY W/D
PD6805 PRINTING BODY SET(O/L)
PD6789 PRINTING BODY SET(R/B)

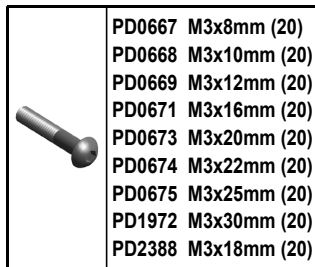


PN1528 EXHAUST HEADER PIPES



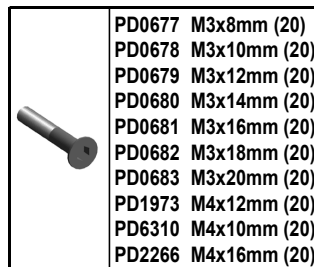
* FOR TRANNS CASE, OUTSIDE

PD0662 BALL BEARING (10), d8xD16xW5



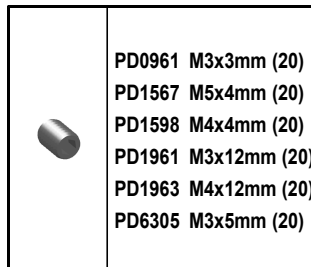
BT MACHINE SCREW

- PD0667 M3x8mm (20)
- PD0668 M3x10mm (20)
- PD0669 M3x12mm (20)
- PD0671 M3x16mm (20)
- PD0673 M3x20mm (20)
- PD0674 M3x22mm (20)
- PD0675 M3x25mm (20)
- PD1972 M3x30mm (20)
- PD2388 M3x18mm (20)



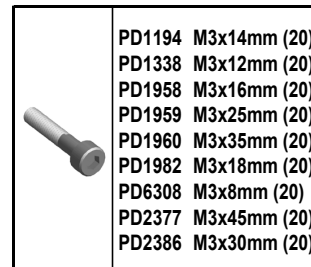
CT MACHINE SCREW

- PD0677 M3x8mm (20)
- PD0678 M3x10mm (20)
- PD0679 M3x12mm (20)
- PD0680 M3x14mm (20)
- PD0681 M3x16mm (20)
- PD0682 M3x18mm (20)
- PD0683 M3x20mm (20)
- PD1973 M4x12mm (20)
- PD6310 M4x10mm (20)
- PD2266 M4x16mm (20)



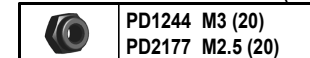
SET SCREW

- PD0961 M3x3mm (20)
- PD1567 M5x4mm (20)
- PD1598 M4x4mm (20)
- PD1961 M3x12mm (20)
- PD1963 M4x12mm (20)
- PD6305 M3x5mm (20)



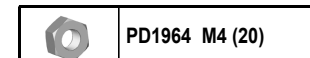
SOCKET HEAD MACHINE SCREW

- PD1194 M3x14mm (20)
- PD1338 M3x12mm (20)
- PD1958 M3x16mm (20)
- PD1959 M3x25mm (20)
- PD1960 M3x35mm (20)
- PD1982 M3x18mm (20)
- PD6308 M3x8mm (20)
- PD2377 M3x45mm (20)
- PD2386 M3x30mm (20)



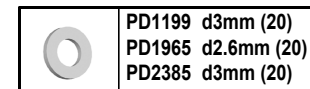
- PD1244 M3 (20)
- PD2177 M2.5 (20)

LOCK NUT



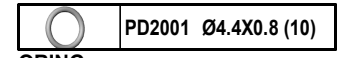
- PD1964 M4 (20)

NUT



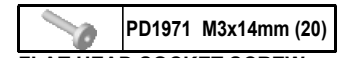
- PD1199 d3mm (20)
- PD1965 d2.6mm (20)
- PD2385 d3mm (20)

WASHER



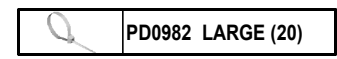
- PD2001 Ø4.4X0.8 (10)

ORING



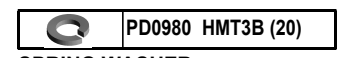
- PD1971 M3x14mm (20)

FLAT HEAD SOCKET SCREW



- PD0982 LARGE (20)

NYLON STRAP



- PD0980 HMT3B (20)

SPRING WASHER



ST-1 SPARE PARTS LIST

PART#	DESCRIPTION	NOTE
9708W	AIR FILTEER,21 WHITE	
PD0050	LARGE NYLON TIE BAG	
PD0547	STANDOFF BALL,(L)	
PD0592	PRESSURE FITTING	
PD0662	B B,MSEALED 8x16x5mm	
PD0667	BT MACH. SCREW,M3x8	
PD0668	BT MACH. SCREW,M3x10	
PD0669	BT MACH. SCREW,M3x12	
PD0671	BT MACH. SCREW,M3x16	
PD0673	BT MACH. SCREW,M3x20	
PD0674	BT MACH. SCREW,M3x22	
PD0675	BT MACH. SCREW,M3x25	
PD0676	CT MACH. SCREW,M3x6	
PD0677	CT MACH. SCREW,M3x8	
PD0678	CT H.M SCREW(20),M3x10	
PD0679	CT H.M SCREW(20),M3x12	
PD0680	CT H.M SCREW(20),M3x14	
PD0682	CT H.M SCREW(20),M3x18	
PD0871	COUPLER TUBE	
PD0961	SET SCREW(20),M3x3	
PD0980	SPRING WASHER	
PD0982	NYLON STRAP,LARGE	
PD1194	SKH.M SCREW (20), M3x3	
PD1199	WASHER,D3mm	
PD1242	CLUTCH HARDWARE, 13	
PD1244	LOCK NUT,BLACK 3mm	
PD1338	SOCKET SCREW(20),3x12	
PD1339	SOCKET SCREW(20),3x20	
PD1720	SET SCREW M3x5 M4x4 M5x4	
PD1869	CLUTCH HARDWARE	
PD1870	FLYWHEEL SET	
PD1871	TRANS CASE/BULKHEAD SET,S3	
PD1875	UNIV. REBUILD KIT,S3	
PD1876	CLUTCH SHOE (3),21	
PD1880	SHOCK DIAPHRAGM(10),S3	
PD1881	O-RINGS & SPACER,S3	
PD1883-T	RR SHOCK BODY(2),ST	
PD1884	FR SHOCK CAP(2),S3	
PD1886	FR SHOCK SHAFT(2),S3	
PD1888	RR SHOCK BOOT(4),S3	
PD1890	SHOCK PLASTIC PARTS,S3	
PD1895	DIFF INNER GEAR&PARTS,S3	

PART#	DESCRIPTION	NOTE
PD1896	DIFF SHIME(10),0.2mm,S3	
PD1897	DIFF CASE,S3	
PD1898	DIFF OUTDRIVE(2) FR&RR,S3	
PD1899	DIFF OUTDRIVE(2),CTR,S3	
PD1905	FR SUSP PLATE,FF0,S3	
PD1906	SUSP. PLATE SET,S3	
PD1907	SUSP. PLATE JOINT,S3	
PD1908	UP SUSP. ARM PLATE,S3	
PD1912	PIVOT BALL,S3	
PD1914	RR LOWER HINGE PIN,S3	
PD1915	KNUCKLE ,S3	
PD1916	ADJ. BALL (4),S3	
PD1917	ADJ. SCREW (4),S3	
PD1918	ST.PIVOT BALL,S3	
PD1921	RR TIE END,S3	
PD1922	RR.PIVOT BALL,S3	
PD1923	REAR HUB SET,S3	
PD1924	HEX WHEEL ADAPTER SET,S3	
PD1925	SEVO SAVER PL. PARTS,S3	
PD1926	SEVO SAVER ML. PARTS,S3	
PD1928	SERVO SAVER BUSHING,S3	
PD1936	ENGINE MOUNT,S	
PD1937	ENGINE MOUNT SPACER,S3	
PD1938	ENGNIN MOUNT WASHER,S3	
PD1939	THRO./ BRAKE LINKAGE,S3	
PD1942	CTR DIFF PLASTIC ASSEMBLY, ST-1	
PD1943	BRAKE CAM & HARDWARE,S3	
PD1944	BRAKE PADS & SCREWS,S3	
PD1945	BRAKE DISCS,S3	
PD1948	R CLIPS(4),L,S3	
PD1949	R CLIPS(4),S,S3	
PD1950	SERVO MOUNT ACC,S3	
PD1951	ALUM SERVO TRAY POST,S3	
PD1952	SERVO HORN, TH&BK/S3	
PD1958	BT MACHINE SCREW,M3x16	
PD1959	BT MACHINE SCREW,M3x25	
PD1960	BT MACHINE SCREW,M3x35	
PD1961	SET SCREW,M3x12	
PD1962	SET SCREW,M3x4	
PD1963	SET SCREW,M4x12	
PD1964	NUT,M4	
PD1965	WASHER,d2.6mm	

PART#	DESCRIPTION	NOTE
PD1968	BALL BEARING,d5xD10xW4	
PD1969	BALL BEARING,d10xD19xW5	
PD1970	DOWEL PIN SET,	
PD1971	FLAT HEAD SOCKET SCREW	
PD1972	BT MACHINE SCREW,M3x30	
PD1973	CT MACHINE SCREW,M4x12	
PD1974	CROSS WRENCH & FUEL PIPE	
PD1975	HEX WRENCH SET,S3	
PD1976	SHOCK PLASTIC BUSHING,S3	
PD1977	BRAKE PAD FIXING SOVEW	
PD1980	CLUTCH SPRING (3),21	
PD1982	SOCKET HEAD SCREW,M3/18	
PD1983	ANENNA BAG,1/8	
PD2001	O-RING,ø4.4,S3	
PD2177	LOCK NUT(20),M2.5	
PD2266	CT MACH. SCREW,M4x16	
PD2281	CASTER SHIM(12)	
PD2331-T	SERVO SAVER TOP PLATE	
PD2332-T	RR CHASSIS BRACE	
PD2333	RR BRACE MOUNT	
PD2334	REAR SUSPN ARM SET(2)	
PD2335	UP SUSPN ARM SET(2)	
PD2336	LWR SUSPN ARM SET	
PD2337	ST.TIE END	
PD2338	CHASSIS GUARD	
PD2339	FF/RR BODY MOUNTS & POSTS	
PD2340	FR UP SUSP. HINGE HOLDER	
PD2341	FUEL TANK & POST	
PD2342	DIFF BEVEL GEAR SET	
PD2343	FR SWAY BAR M&H,2.7mm	
PD2344	RR SWAY BAR M&H	
PD2345-T	CARBON SERVO TRAY	
PD2346	ST.PIVOT BALL	
PD2347	RR TURNBUCKLE	
PD2348	RR TURNBUCKLE	
PD2349	FR SHOCK TOWER	
PD2350	RR SHOCK TOWER	
PD2351	STEERING SLIDER	
PD2352	FR/RR SHOCK STANDOFF	
PD2353-T	CHASSIS	
PD2354	SERVO TIE ROD	
PD2355-T	CHASSIS	



ST-1 PARTS LIST

PART#	DESCRIPTION	NOTE
PD2356	FR BUMPER	
PD2357	FR/RR SHOCK SET PIN	
PD2358	FR TORQUE ROD	
PD2359	WING ASSEMBLY	
PD2360	CHASSIS GUARD	
PD2361-T	CHASSIS	
PD2362	CUBIC TRUCK TIRE	
PD2363	WHEELS	
PD2364	STEEL MAIN GEAR,50T	
PD2365	RECEIVER BOX	
PD2366	CTR CVA FR/RR	
PD2367	RR BALL UNIVERSAL(2)	
PD2368	FR BALL UNIVERSAL(2)	
PD2369	FR SHOCK SET(2)	
PD2370-T	FR SHOCK BODY(2), ST	
PD2371	FR SHOCK SHAFT(2)	
PD2372	SHOCK PSITON(4)	
PD2373	FR SHOCK BOOT(4)	
PD2374	FR/RR SHOCK SPRING(2)	
PD2375	FUEL TANK & POST	
PD2376	SUSP. HINGE PIN SET	
PD2377	SK H.M SCREW (20),M3x45	
PD2378	CTR DIFFERENTIAL SET	
PD2379	FRONT/ REAR DIFFERENTIAL SET	
PD2380	BODY DECAL	
PD2381	WINDO MASK	
PD2382	1/8 TUNED PIPE	
PD2383	RR SHOCK SET(2)	
PD2384	CTR DIFF PL. ASSY	
PD2385	WASHER SET, ST	
PD2386	SOCKET SREW (20), M3x35	
PD2387	MUFFLER MNT. WIRE, ST	
PD2389	FR SHOCK CAP (2)	
PD6308	SK H.M SCREW (20),M3x8	
PD6310	CT MACH. SCREW,M4x10	
PD6794	PRINTING BODY SET(P/S)	
PD6800	CLEAR LEXON BODY w/D	
PD6805	PRINTING BODY SET(O/L)	
PD6789	PRINTING BODY SET(R/B)	
PN1528	EXHAUST HEADER PIPES	

OPTIONAL PARTS LIST

PART#	DESCRIPTION	NOTE
9708G	AIR FILTER, 1/8, GREEN	
9708P	AIR FILTER, 1/8, PINK	
9708B	AIR FILTER, 1/8, BLACK	
9796	3-CHAMBER TUNED PIPE(L), EFRA 2035	
9796-1	3-CHAMBER TUNED PIPE(L), W/ MANIFOLD EFRA 2035	
9797	3-CHAMBER TUNED PIPE(S), EFRA 2039	
9797-1	3-CHAMBER TUNED PIPE(S), W/ MANIFOLD EFRA 2039	
AD2523-R	ANODIZED WASHER	
PD0399	ALUM TURNBUCKLE WRENCH,5mm	
PD0470	CLUTCH BELL 26mm,15T, 1/8	
PD0619	CLUTCH BELL 26mm,14T, 1/8	
PD0680	CT MACH. SCREW M3x14	
PD1798	MANIFOLD	
PD1843-R	CFRP SS TOP PLT(R)S3OP	
PD1843-S	CFRP SS TOP PLT(S)S3OP	
PD1845	CFRP CTR DIFF MOUNT,S3OP	
PD1847	FR PLT FR TRN,FF-1S3OP	
PD1848	FR PLT FR TRN,FF0 S3OP	
PD1849	FR PLT FR TRN,FF+1S3OP	
PD1850	A7075RR PLT FR TRN,FR0S3OP	
PD1851	A7075FR PLT RR TRN,RF0S3OP	
PD1852	A7075FR PLT RR TRN,RF4S3OP	
PD1853	A7075RR PLT RR TRN,RR2S3OP	
PD1854	A7075RR PLT RR TRN,RR3S3OP	
PD1855	A7075UP ARM PLATE,S3OP	
PD1857	ALUM S.SAVER SET,S3OP	
PD1859	LITE ENG MOUNT,S3OP	
PD1860	HARD SWAY BAR BALL,S3OP	
PD1861	HEATSINK DISC BRAKE,S3OP	
PD1862	WING POST,S3OP	
PD1863	LITE PIVOT BALL,S3OP	
PD1864	LITE HEX WHL ADAPTERS3OP	
PD1865	LITE S-LOCK WHL NUT,S3OP	
PD1903-Y	REAR WING, YELLOW, 1/8 WIDE	
PD1903-B	REAR WING, BLACK, 1/8 WIDE	
PD1903-G	REAR WING, GREEN, 1/8 WIDE	
PD1903-P	REAR WING, PINK, 1/8 WIDE	
PD1903-O	REAR WING, ORANGE, 1/8 WIDE	
PD1989	A7075FR PLT R TRN, RF2 S3 OP	

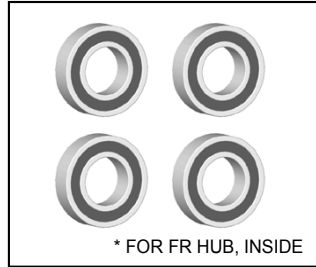
PART#	DESCRIPTION	NOTE
PD1990	A7075FR PLT R TRN, RF3 S3 OP	
PD1991	A7075FR PLT R TRN, RR2.5 S3 OP	
PD1992	A7075FR PLT R TRN, RR4 S3 OP	
PD2271	2 SPD CLTCH HUB HARDWARE	
PD2272	2 SPEED ONE WAY HUB	
PD2274	2 SPEED DRIVE SHAFT	
PD2275	2 SPEED SHAFT OUTDRIVE	
PD2276	ONE WAY BEARING	
PD2277	FLANGE BEARING	
PD2311-R	CFRP FR SHOCK TOWER ST-1	
PD2311-S	CFRP FR SHOCK TOWER ST-1	
PD2312-R	CFRP RR SHOCK TOWER ST-1	
PD2312-S	CFRP RR SHOCK TOWER ST-1	
PD2313-R	CFRP SERVO TRAY(R) ST-1	
PD2313-S	CFRP SERVO TRAY(S) ST-1	
PD2314-R	CFRP CTR DIF PLT-R	
PD2314-S	CFRP CTR DIF PLT(S)	
PD2315	A75 ST.SLIDER W/BB ST-1	
PD2316-G	SWAY BAR (G),3mm ST-1	
PD2316-S	SWAY BAR (S),2.5mm ST-1	
PD2317	FR SHOCK SPRING, ST1	
PD2318	RR SHOCK SPRING ST-1	
PD2319-B	REAR WING, BLACK,1/8	
PD2319-G	REAR WING, GREEN,1/8	
PD2319-O	REAR WING, ORANGE,1/8	
PD2319-P	REAR WING, PINK,1/8	
PD2319-Y	REAR WING, YELLOW,1/8	
PD2320	REAR WING MOUNT	
PD2321	2-SPEED ASSEMBLY	
PD2322	2-SPEED SPUR GEAR	
PD2323	2-SPEED PINION GEAR	
PD2324-W	EXTEND WHEEL (2), 17mm WHITE, 1/8	
PD2324-Y	EXTEND WHEEL (2), 17mm YELLOW, 1/8	
PD2324-B	EXTEND WHEEL (2), 17mm BLACK, 1/8	
PD2324-G	EXTEND WHEEL (2), 17mm GREEN, 1/8	
PD2324-P	EXTEND WHEEL (2), 17mm PINK, 1/8	

ST-1 PARTS LIST



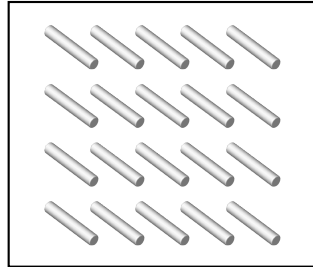
* FOR SERVO SAVER

PD1968 BALL BEARING,
d5xD10xW4

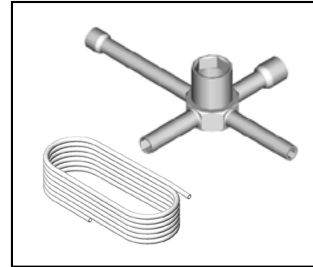


* FOR FR HUB, INSIDE

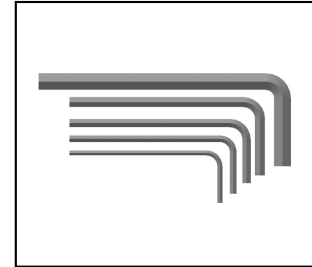
PD1969 BALL BEARING,
d10xD19xW5



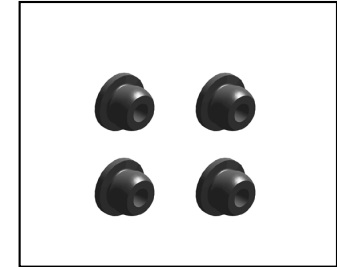
PD1970 DOWEL PIN SET



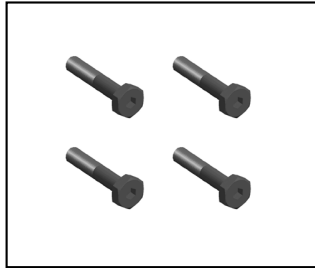
PD1974 CROSS WRENCH &
FUEL PIPE



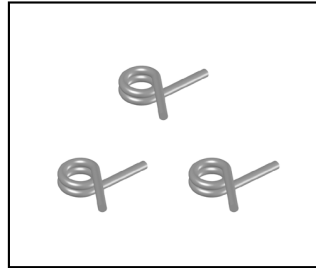
PD1975 HEX WRENCH SET,S3



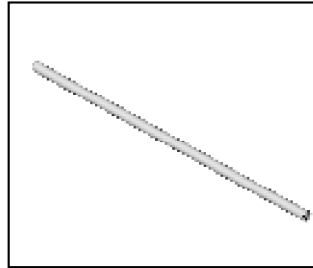
PD1976 SHOCK PLASTIC
BUSHING,1/8



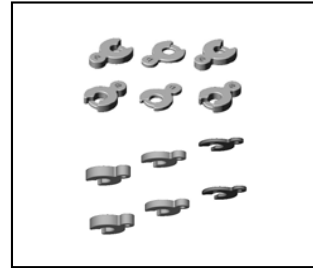
PD1977 BRAKE PAD FIXING
SCREW



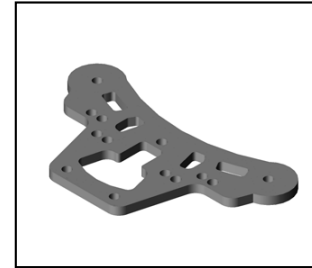
PD1980 CLUTCH SPRING (3),
1mm



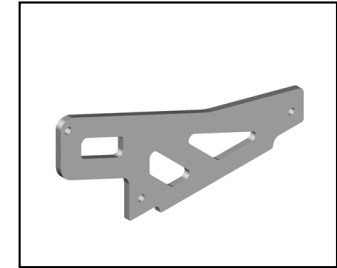
PD1983 ANTENNA BAG, 1/8



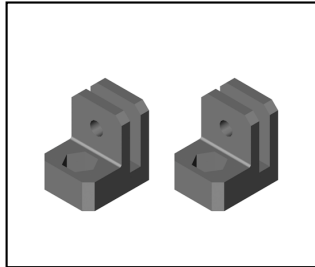
PD2281 CASTER SHIM (12)



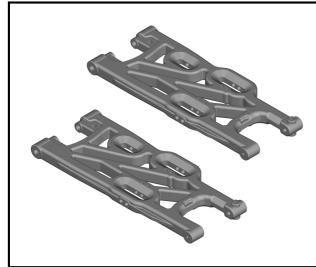
PD2331-T SERVO SAVER TOP
PLATE,TITANIUM



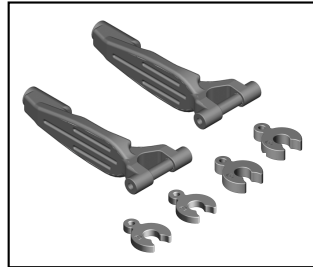
PD2332-T RR CHASSIS BRACE
PLATE



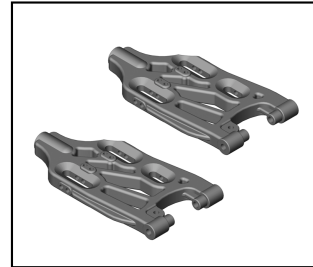
PD2333 RR BRACE MOUNT



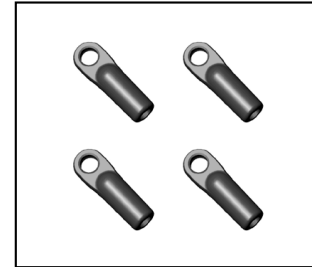
PD2334 REAR SUSP ARM SET(2)



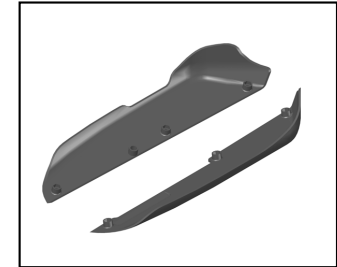
PD2335 UP SUSP ARM SET (2)



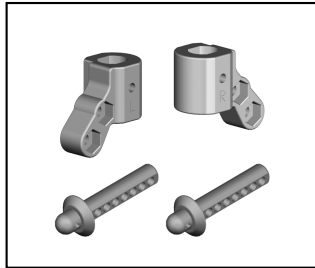
PD2336 LWR SUSP ARM SET(2)



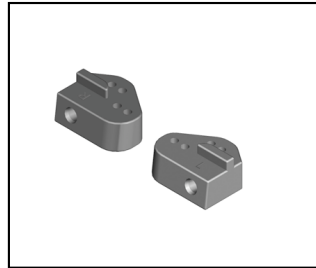
PD2337 ST.TIE END



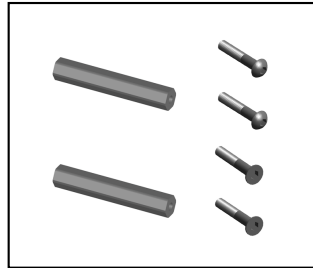
PD2338 CHASSIS GUARD



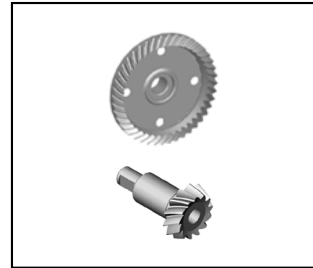
PD2339 FF/RR BODY MOUNTS
& POSTS



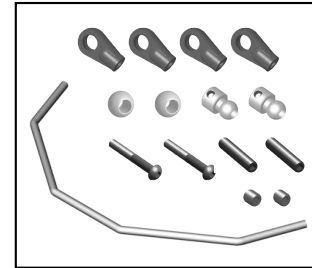
PD2340 FR UP SUSP. HINGE
HOLDER



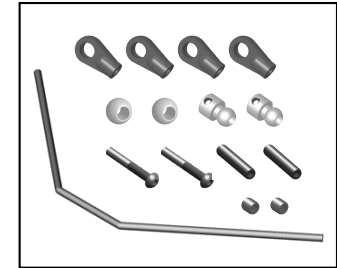
PD2341 FUEL TANK & POST



PD2342 DIFF BEVEL GEAR SET

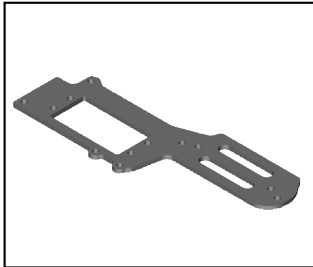


PD2343 FR SWAY BAR M&H,
2.7mm

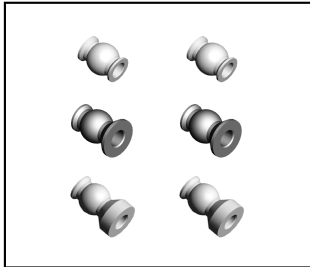


PD2344 RR SWAY BAR M&H

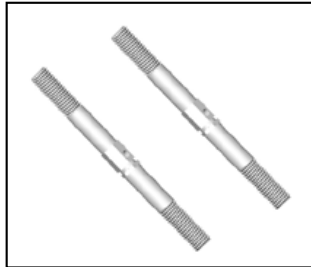
ST-1 PARTS LIST



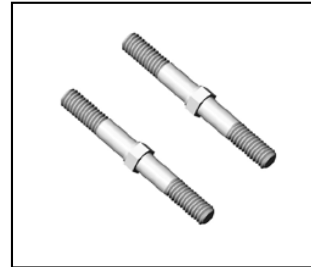
PD2345-T CARBON SERVO TRAY,
TITANIUM



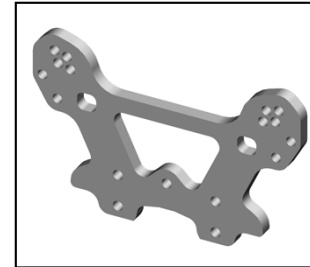
PD2346 ST.PIVOT BALL



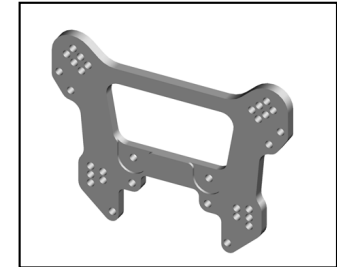
PD2347 RR TURNBUCKLE



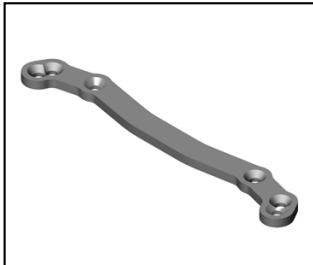
PD2348 ST.TURNBUCKLE



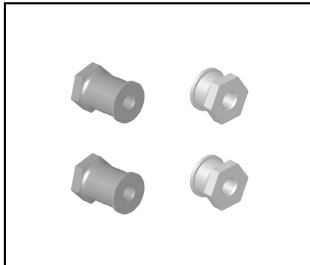
PD2349 A6061 FR SHOCK
TOWER



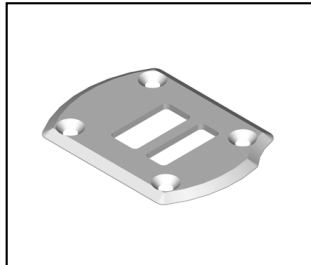
PD2350 A6061 RR SHOCK
TOWER



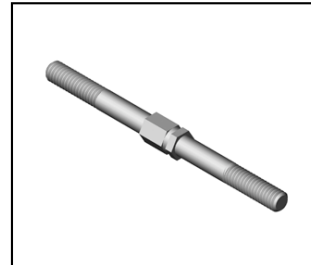
PD2351 STEERING SLIDER



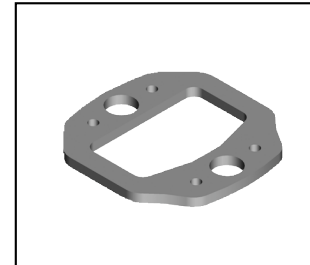
PD2352 FR/RR SHOCK STAND
OFF



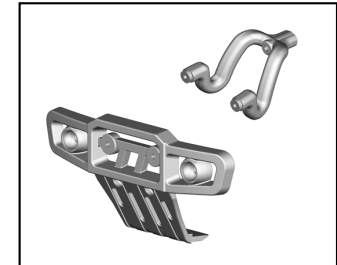
PD2353-T CHASSIS



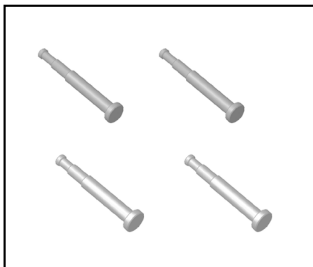
PD2354 SERVO TIE ROD



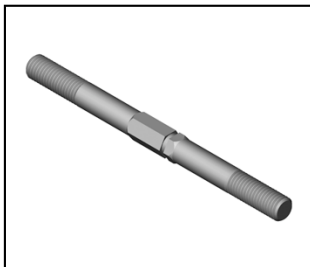
PD2355-T CHASSIS



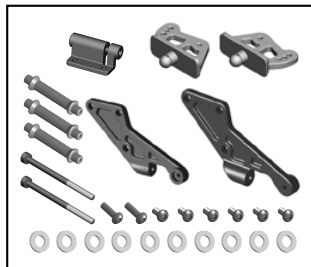
PD2356 FR BUMPER



PD2357 FR/RR SHOCK SET
PIN



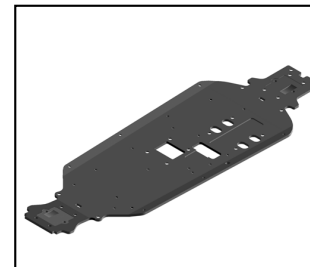
PD2358 FR TORQUE ROD



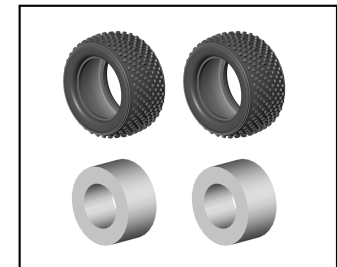
PD2359 WING ASSEMBLY



PD2360 CHASSIS GUARD



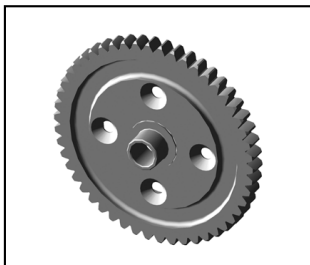
PD2361-T CHASSIS



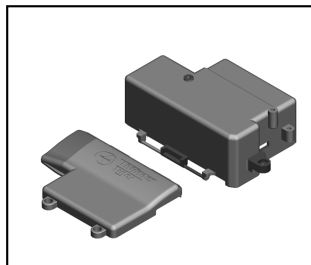
PD2362 CUBIC TRUCK TIRE



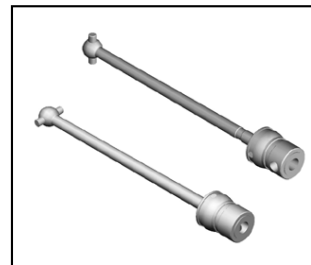
PD2363 5 SPOKE WHL, 17mm,
WHITE, 1/8



PD2364 STEEL MAIN GEAR,
50T



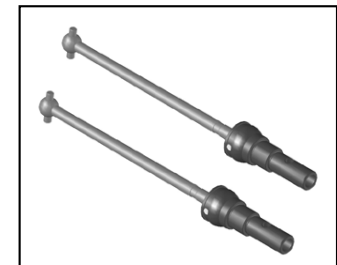
PD2365 RECEIVER BOX



PD2366 CTR CVA FR/RR



PD2367 RR CVA (2)



PD2368 FR CVA (2)

ST-1 OPTIONAL PARTS LIST



9708G AIR FILTER, 1/8, GREEN
9708P AIR FILTER, 1/8, PINK
9708B AIR FILTER, 1/8, BLACK



(IMOLA RED)
PD1843-R CFRP SERVO SAVER TOP PLATE(R)



PD1850 A7075 RR PLATE FR TRANS, FR0, S3 OPT



PD1857 ALUM SERVO SAVER SET, S3 OPT



PD1864 LITE HEX WHL ADAPTER, S3 OPT



PD2272 2 SPEED ONE WAY HUB



PD2311-R CFRP FR SHOCK TOWER(R)
PD2311-S CFRP FR SHOCK TOWER(S)



PD2317 FR SHOCK SPRING, ST-1



PD2320 REAR WING MOUNT



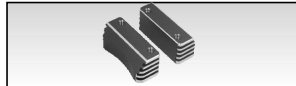
9796 3-CHAMBER TUNED PIPE(L), EFRA 2035
9796-1 3-CHAMBER TUNED PIPE(L), W/ MANIFOLD EFRA 2035



(DIAMOND SILVER)
PD1843-S CFRP SERVO SAVER TOP PLATE(S)



PD1851 A7075 FR PLATE RR TRANS, RF0, S3 OPT



PD1859 LITE ENGINE MOUNT, S3 OPT



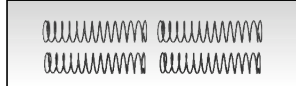
PD1989 A7075 FR PLATE RR TRANS, RF2 S3, OPT



PD2274 2 SPEED DRIVE SHAFT



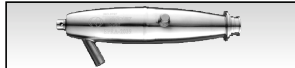
PD2312-R CFRP RR SHOCK TOWER(R)
PD2312-S CFRP RR SHOCK TOWER(S)



PD2318 RR SHOCK SPRING, ST-1



PD2322 2-SPEED SPUR GEAR



9797 3-CHAMBER TUNED PIPE(S), EFRA 2039
9797-1 3-CHAMBER TUNED PIPE(S), W/ MANIFOLD EFRA 2039



PD1845 CTR DIFF MOUNT, S3 OPT



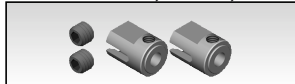
PD1852 A7075 FR PLATE RR TRANS, RF4, S3 OPT



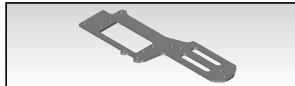
PD1860 HARD SWAY BAR BALL, S3
PD1865 LITE SELF-LOCK WHL HEX NUT



PD1990 A7075 FR PLATE RR TRANS, RF3 S3, OPT



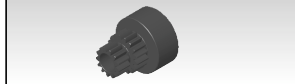
PD2275 2 SPEED SHAFT OUTDRIVE



PD2313-R CFRP SERVO TRAY(R)
PD2313-S CFRP SERVO TRAY(S)



PD2321 2-SPEED ASSEMBLY



PD2323 2-SPEED PINION GEAR



AD2523-R ANODIZED WASHER(6), OPT



For AD2523-R
PD0680 CT MACH. SCREW(20), M3x14



PD1847 ALUM FR PLATE FR TRANS, FF-1, S3 OPT



PD1853 A7075 RR PLATE RR TRANS, RR+2, S3 OPT



PD1861 HEATSINK DISC BRAKE, S3 OPT



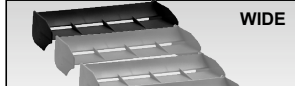
PD1991 A7075 FR PLATE RR TRANS, RR2.5 S3, OPT



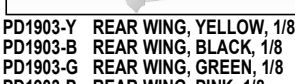
PD2276 ONE WAY BEARING



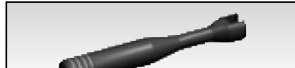
PD2314-R CFRP CTR DIF PLT(R)
PD2314-S CFRP CTR DIF PLT(S)



WIDE



PD1903-Y REAR WING, YELLOW, 1/8
PD1903-B REAR WING, BLACK, 1/8
PD1903-G REAR WING, GREEN, 1/8
PD1903-P REAR WING, PINK, 1/8
PD1903-O REAR WING, ORANGE, 1/8



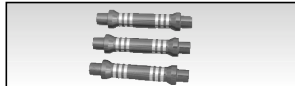
PD0399 ALUM. TURNBUCKLE WRENCH, 5mm



PD1848 ALUM FR PLATE FR TRANS, FF0, S3 OPT



PD1854 A7075 RR PLATE RR TRANS, RR+3, S3 OPT



PD1862 WING POST, S3 OPT



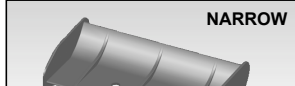
PD1992 A7075 FR PLATE RR TRANS, RR4 S3, OPT



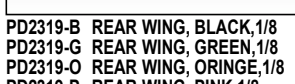
PD2277 FLANGE BEARING



PD2315 A7075 LITE ST SLIDER W/BB



NARROW



PD2319-B REAR WING, BLACK, 1/8
PD2319-G REAR WING, GREEN, 1/8
PD2319-O REAR WING, ORANGE, 1/8
PD2319-P REAR WING, PINK, 1/8
PD2319-Y REAR WING, YELLOW, 1/8



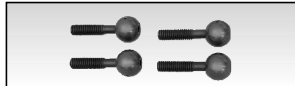
PD0470 CLUTCH BELL 26mm,15T, 1/8
PD0619 CLUTCH BELL 26mm,14T, 1/8



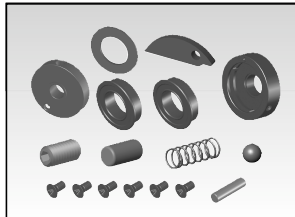
PD1849 ALUM FR PLATE FR TRANS, FF+1, S3 OPT



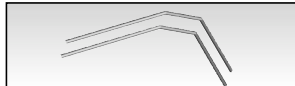
PD1855 A7075 UPPER ARM PLATE, S3 OPT



PD1863 LITE PIVOT BALL(4), S3 OPT



PD2271 2 SPD CLTCH HUB HARDWARE



PD2316-G SWAY BAR,GOLD 3mm



PD2316-S SWAY BAR,SILVER 2.5mm



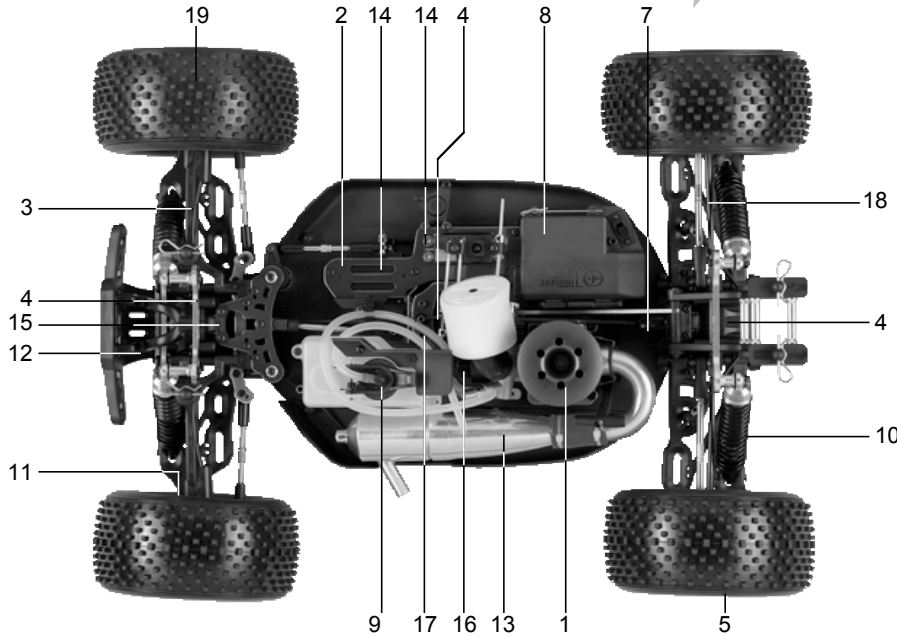
PD2324-W EXTEND WHEEL (2), 17mm WHITE, 1/8
PD2324-Y EXTEND WHEEL (2), 17mm YELLOW, 1/8
PD2324-B EXTEND WHEEL (2), 17mm BLACK, 1/8
PD2324-G EXTEND WHEEL (2), 17mm GREEN, 1/8
PD2324-P EXTEND WHEEL (2), 17mm PINK, 1/8



ST-1

No.6233-F

1/8th Nitro Powered 4WD Stadium Racing Truck



- 1) Powerful 4.60c.c.pro-28bx-r pull start engine with 2 needle slide carb.
- 2) Ti color anodized radio tray and steering brace
- 3) Extra long and rigid suspension arms provide superior handling, and better cornering ability than other trucks.
- 4) 3 sets of durable gear differentials
- 5) Eight-spoke chrome wheels & race ready high grip tires.
- 6) Lowest c.g.. provides stable handling and resists rollovers.
- 7) Fully equipped c.v. driveshafts, front, rear and center.
- 8) Enclosed radio box enables to install 5 aa size batteries.
- 9) 150c.c. large capacity fuel tank with large fuel splash guard
- 10) 4 machined aluminum oil-filled shocks with 3.5mm shafts, maximum for 8 shocks installed possibly
- 11) Tuned pillow ball front susp. system for ease of camber tuning.
- 12) Variable toe & squat blocks equipped.
- 13) Aluminum tuned pipe & header
- 14) High torque 8.kg metal gear steering & throttle/brake servos included.
- 15) Full set of ball bearings to keep drivetrain componets spinning freely.
- 16) Composite 3-shoe clutch
- 17) Dual oil-resistant fiber disc brakes.
- 18) 3.5mm front/rear sway bar included
- 19) 17mm hex drives fit pro-line 40 series tires

KIT

Specification:

Length: 485mm
 Width: 380mm+/-5mm
 Height: 182mm
 Wheelbase: 349mm~365mm
 FR/RR Track: 335mm~345mm/340mm
 Weight: 3920g
 Ground Clearance: 48mm

ACCESSORIES RECOMMENDED



Super Torque Digital Servo



Thunder Tiger



Glow Starters

- No.2150 1.8AH Long Glow Starter w/110V 2P
- No.2151 1.8AH Long Glow Starter w/230V 2P
- No.2152 1.8AH Long Glow Starter w/230V 3P

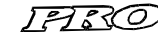
No.1261
600cc Fuel Bottle
 No.1266
300cc Fuel Bottle



Hex Driver Set



No.1116
5-Way Wrench



Starter box

No.2409

